

## PRACTICAL INFORMATIONS

Adress: ARRESØCENTRET  
 Auderød Byvej 4  
 DK-3300 Frederiksværk

Train: Copenhagen - Hillerød - Frederiksværk

Bus connection: Line 319: Frederikssund - Frederiksværk  
 Line 324: Hillerød - Frederiksværk

## MORE INFORMATIONS:

Birgitte Rose, Frejasvej 4, DK-3400 Hillerød  
 Tel: +45 48 25 39 87, E-mail: br@arresoe.dk

[www.arresoe.dk](http://www.arresoe.dk)



Facts about the  
 green activity centre  
 in North Zealand  
 Denmark



**ARRESØCENTRET**  
**KFUM-scouts in Denmark**  
[www.arresoe.dk](http://www.arresoe.dk) - part of Europe For You! - programme



**ARRESØ SCOUT CENTRE** is placed in the quiet and beautiful surroundings of Arrenæs, app. 3 km from Frederiksværk, nearby forests and directly at Arresø, which is the biggest lake in Denmark.

**ARRESØ SCOUT CENTRE** is a four winged farm "Ellehavegaard" with 22 acres land – owned by the YMCA-Scouts in the northern part of Zealand. Two wings can be booked - the main building and the east wing. The wings can be booked separately or together and have room for respectively 48 and 50 persons. Both are equipped with kitchen facilities, toilets and showers. The campsite is divided into patrol- and troop sites for camping and bigger ones for activity. There are many facilities at the camp site: 2 shelters, lath-yard, firewood, water cocks, a building with toilets and showers, a place for service and an outdoor kitchen. A provision room with refrigerators, freezers and shelves for the food is available – here are also coffee machines and water boilers (for leaders addicted to coffee in the morning).

At **ARRESØ SCOUT CENTRE** it is also possible to be member of the staff, when center camp - or maybe experience creative activities at the Rover Workshop - a course for rovers and leaders aged 17+.

**ARRESØ SCOUT CENTRE** is one of the many scout centers in Denmark supporting the scouts with camps and trainings courses.



## WHAT TO SEE

FREDERIKSVÆRK	Museum for the factory for powder production Town Museum
HUNDESTED	Knud Rasmussens Museum (Explorer of Greenland)
HILLERØD	Frederiksborg Castle The Museum for North Zealand
ROSKILDE	Viking ship Museum
HELSINGØR	Kronborg Castle and the cathedral
LISELEJE	Beach
COPENHAGEN	Many things to explore

More informations:  
[www.frvturist.dk](http://www.frvturist.dk)  
[www.visitnordsjaelland.dk](http://www.visitnordsjaelland.dk)  
[www.visitcopenhagen.dk](http://www.visitcopenhagen.dk)



*Frederiksborg Castle in Hillerød*

# CENTRE CAMP

At the Arresø Scout Centre, centre camps are held in the school holidays from Saturday at 2 Saturday at 12 a.m. primary at the



## Introduction day

In springtime we have an introduction day for planning the details for the centre camp together with the leaders from the different groups.

## Centre Camp Program

The leaders are requested to plan and carry out their programme for the whole day for their own scouts, but the activity description and the material is at hand and free to be used without extra charge. The staff at the centre will guide you in selecting and planning the activities. With special activities such as sailing and forging the staff will guide you through.

## Common leader meeting

On the arrival at every centre camp, the staff at the centre will hold a common leader meeting to coordinate the various activities for the period, so the groups do not carry out the same activities at the same time. Also common activities such as campfire evening will be planned.

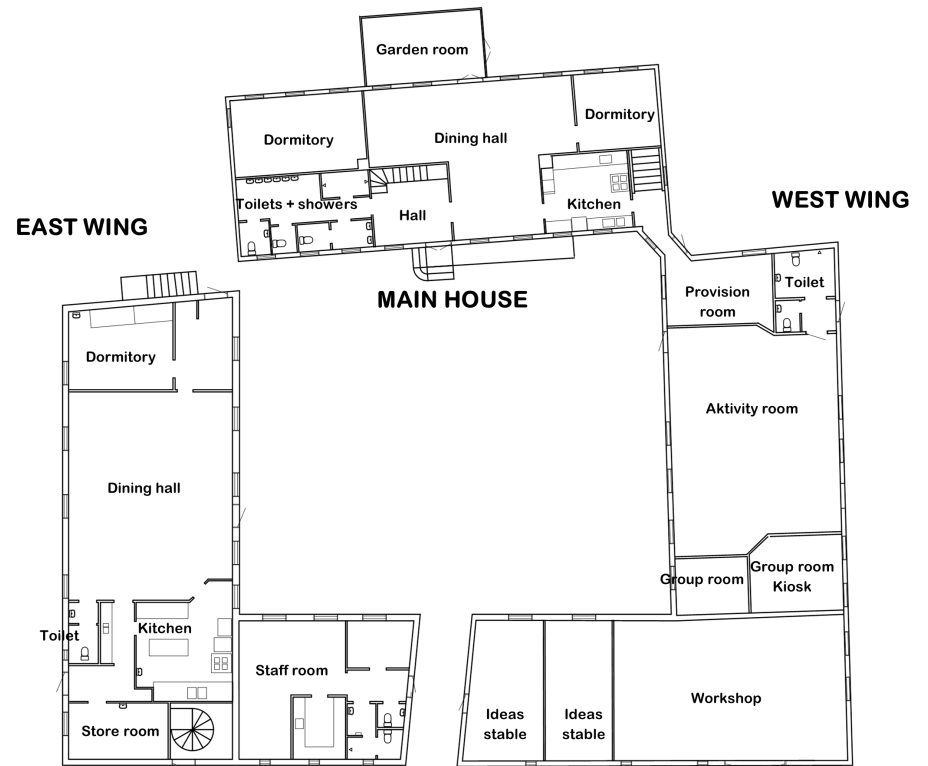
## Provisions



The centre has an arrangement with a local store to deliver provisions. Besides that there are many possibilities for shopping in Frederiksværk.

### Kiosk

Soda, sweets, ice, badges, T-shirts and mugs will be for sale. Opening hours will be coordinated at the leader meeting.



## Staff Room

Residence for the staff.

## Idea Stable:

Ideas and materials for activities. Open during your stay.

## Workshop:

Open after arrangement with the staff.

## West Wing:

Tables and chairs for 90 persons. West Wing is used for indoor activities. Incl. whiteboard, internet connection and AV-materials.

## Provisions Room:

Is used by the group at the campsite. Installed with freezer, refrigerators and shelves for food to be kept. Coffee makers and water boilers are available.

## Meeting Room:

With whiteboard. Is used for Kiosk during centre camps.

## Internet:

Wireless Internet connection in all wings

# Main House

## Ground floor (Look figure at side 3):

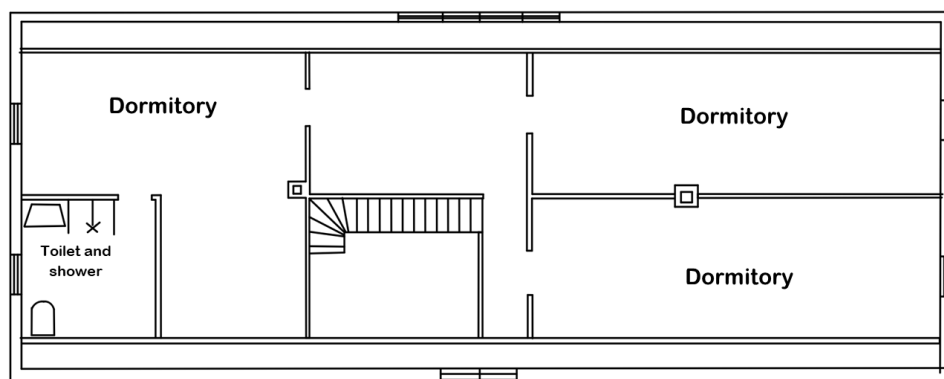
- Dining Hall: Tables and chairs for 50.  
Garden Room: Tables and chairs for 12 (Indoor use only)  
Kitchen: Crockery for 50 (Separate crockery at hand).  
Gas cooker with oven, coffee maker, refrigerators, freezer and dishwasher.  
Baths/Toilets: 3 wc's, wash basins og 2 showers.  
Sleeping Room: Beds and Bunks for 7 and 12 persons.

## 1. floor:

- Sleeping Room: Two rooms with beds and bunks for 10 persons each and one leader room with beds and bunks for 9 persons.  
Bath and toilet: Wc and shower.

PS! You must use sheet for the beds (You can rent it at the centre).

## 1. Floor Main House



In connection with the Main House there is a large garden with a flagpole (Danish flag available). Campfire places are at the campsite. Cause of the thatched roofs - use only barbeque etc. at the campsite. Large barbeque is available.

# AKTIVITETER

Arresø Scout centre offers many interesting experiences. We have about 100 activities divided into different categories (please ask for the activity leaflet). Your group leader is responsible for carrying out your activity. In the school holidays the centre carry out special activities.

## Traditional scouting:

The materiel for pioneering, hikes orienteering and sailing is available at the centre. You may build a raft to sail at the Arresø.

## Sailing:

Here you learn to sail with different types of small sail boats. Is only available with instructor from the centre.



## Nature and environment:

Nature trekking, studying small lakes etc.

## Old handcrafts:

Especially in the school holidays as an activity, we do old handcrafts, such as forging, robe making and baking in oven.

## Idea Stable:

Here we have detailed descriptions of all our activities. Beside that you find a big selection of books, periodicals and tourist information.

## Materiel:

Besides all materiel for the activities, we have axes, saws and spades and so on. You can also rent a tent and other equipments for camping.

Information og courses and events - look up [www.arresoe.dk](http://www.arresoe.dk).

# THE CAMPSITE

## At the campsite you will find

Lath yards  
Woodsheds  
Water cocks  
Landing Stage  
Barrels for building rafts



## Common facilities

Campfire places  
Flagpoles  
Toilet building with showers  
Store house for activity material  
Outdoor kitchen

## Activity places

Facilitated places for forging,  
baking in oven and rope making

## TOILETBYGNING

The toilet building is divided into girls, boys and handi-capped sections with wc's, wash basins and showers with hot and cold water



# East Wing

## Ground floor (Look figure at side 3):

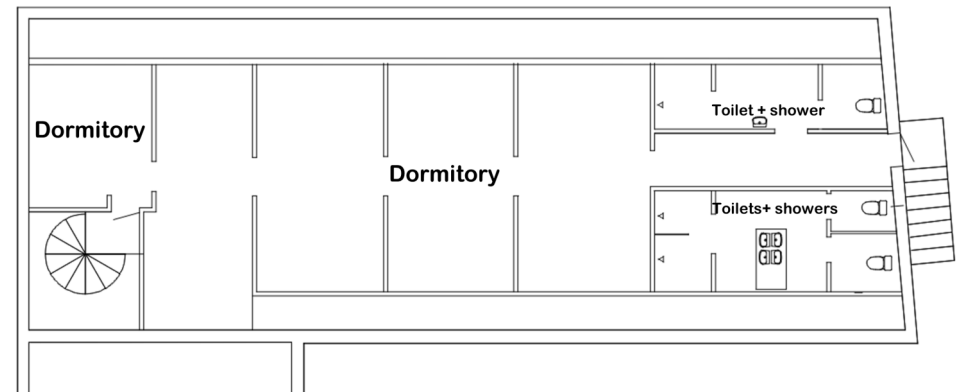
Dining Hall: Tables and chairs for 50.  
Kitchen: Crockery for 50 (Separate crockery at hand).  
Gas cooker, oven, coffee maker, refrigerators, freezer and dishwasher.  
Kitchen entrance: For kitchen staff only.  
Toilet: Wc and wash basin.  
Leader room: Beds and Bunks for 6.

## 1. floor:

Sleeping room: 27 beds and 13 bunks divided into rooms without doors.  
Leader room: 4 beds.  
Bath og toilets: 3 wc's, 5 wash basins og 3 showers.

PS! You must use sheet for the beds (You can rent it at the centre).

## 1. Floor East Wing



In connection with the East Wing there is a large garden. Campfire places are at the campsite. Cause of the thatched roofs - use only barbeque etc. at the campsite. Large barbeque is available.





- A Ellehavegaard
- B Private
- C Private
- D Carbage yard
- E Water and firewood
- F Water
- G Batds + Toilets
- H Sailor House
- I Activity House
- J Campfire place
- K Smithy
- L Place for service
- M Lathyard
- N Landing stage
- O Outdoor kitchen and backing oven
- P Carpark
- Q Shelters
- R Cottage for bonfire

